

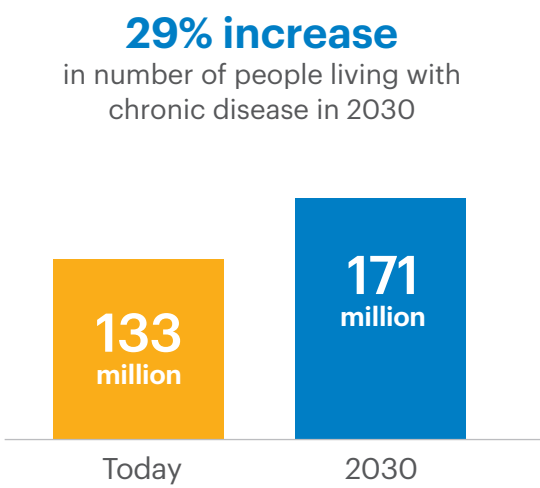


Reinvest in Health:

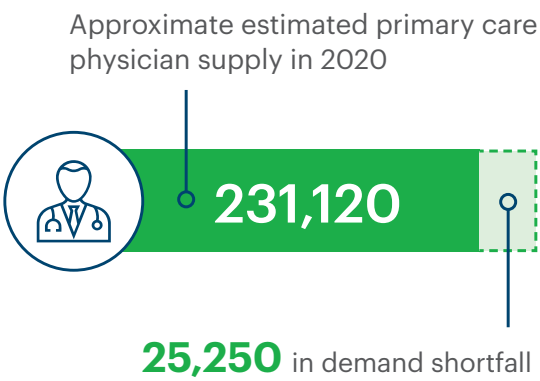
Landscape and Proposed Solutions

A health care delivery system under strain

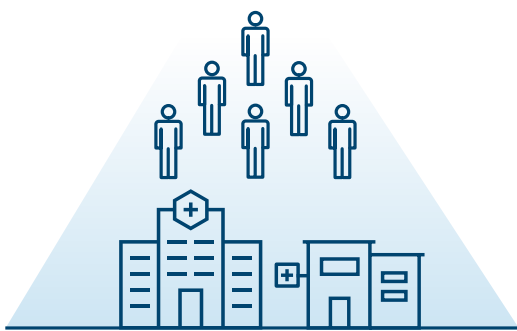
Chronic conditions on the rise¹



Provider shortage²



Millions more people are entering the health care delivery system

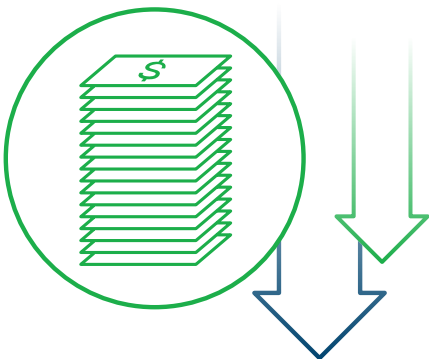


Inadequate investment in health



23% drop
in U.S. share of global medical research funding from 2004 to 2011³

RESULT:
fewer valuable patents over time



Between 2002 and 2014 funding for public health in the United States **declined by 17%⁴**

Proposed solutions

Create a 21st Century Health Workforce	 Reward Providers for High-Quality Care	 Remove Barriers and Regulatory Constraints to Practice of Medicine	 Attract, Train, Equip, and Deploy a Modern Workforce
Invest in Medical and Health Services Research and Innovation	 Invest in Medical Discovery, Development, and Approval	 Expand CDC Prevention Research and Public Health Threat Funding	 Preserve and Increase AHRQ Funding
Enable a Data-Driven, Interoperable Health Care System	 Encourage and Incentivize Secure Sharing of Actionable Health Data	 Establish Common Standards and Enforcement Mechanisms that Advance Interoperability	
Prioritize Prevention	 Invest to Expand Breadth and Depth of Evidence-Based Prevention Efforts	 Encourage Adoption of Proven Prevention Strategies	 Remove Barriers to Growth of Prevention Efforts

¹ http://www.fightchronicdisease.org/sites/default/files/docs/GrowingCrisisofChronicDiseaseintheUSfactsheet_81009.pdf
² <https://www.aamc.org/data/workforce/reports/439206/physicianshortageandprojections.html>
³ <http://jamanetwork.com/journals/jama/article-abstract/2089358>
⁴ <http://ajph.aphapublications.org/doi/pdf/10.2105/AJPH.2015.302908>